



Maritime Mount



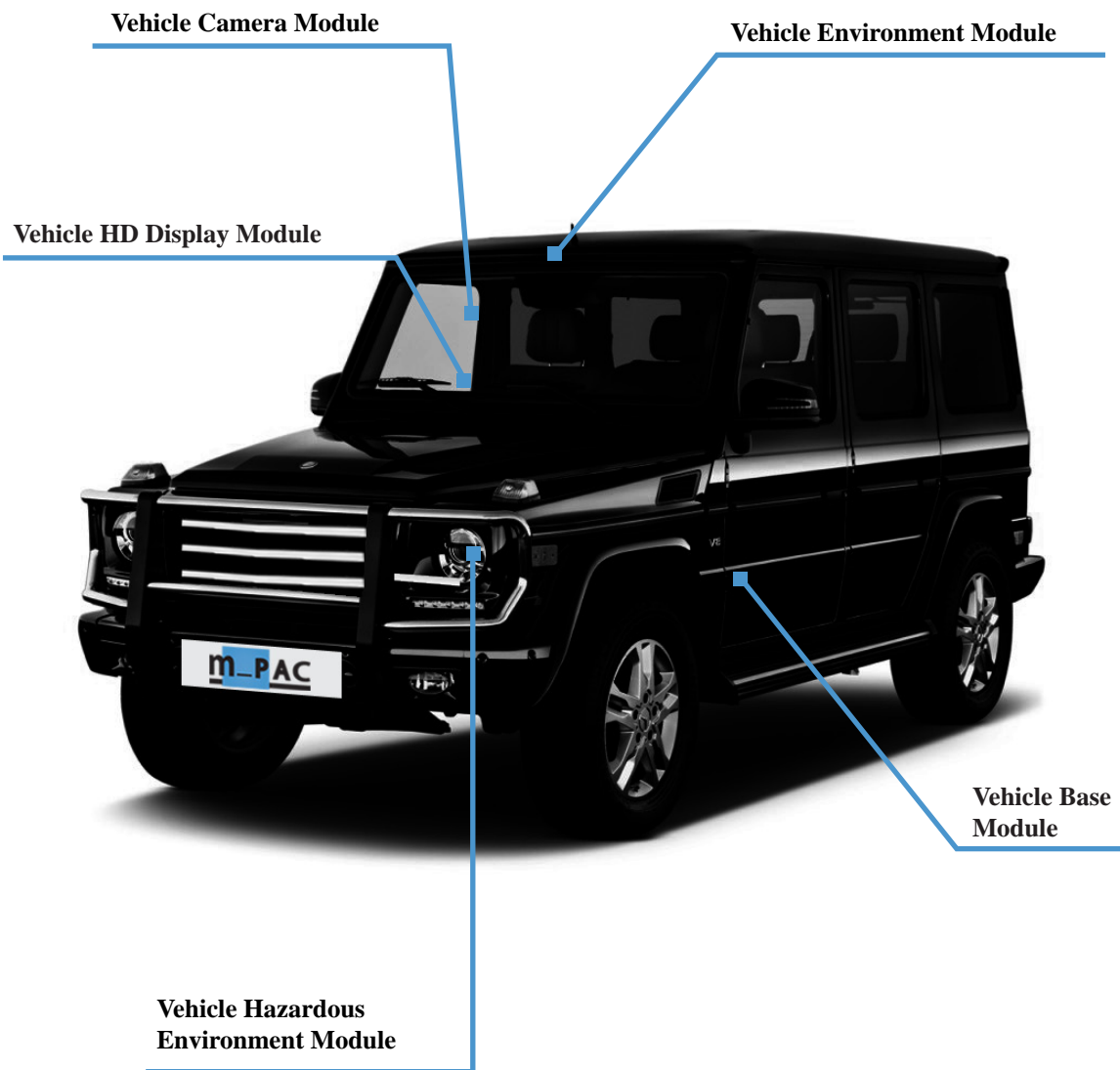
Smart Technology



In-Vehicle Mount



External Vehicle Mount



Accessories

- Vehicle Cable Harness
- USB Charger
- External Vehicle Antenna

Description

Vehicles are often an integral component of large area or mobile surveillance details, calling on the vehicle itself to be an information gathering asset. Through a hybrid of the REKKS-SPS and PSS modules, we offer a full range of security and surveillance tools to equip vehicles with advanced capabilities. Our vehicle modules are designed for complete vehicle integration into almost any vehicle make and model.

As with the PSS, driver or passenger vitals can be monitored through the vitality module sensors. The VSS is also able to run vehicle diagnostics and share this information with the command center. Essential positioning and environment information can be detected and monitored by incorporating GPS, navigation, and externally mounted environmental sensors. For detecting potential environmental hazards, a Hazardous Environment module can also be integrated into the vehicle.

System Modules

- Vehicle Base Module
- Vehicle Camera Module
- Vehicle Environment Module
- Vehicle HD Display Module
- Vehicle Hazardous Environment Module

Applicable Industries

- Correctional Facility Transports
- First Responders
- Guard Services
- Insurance Appraisals
- Law Enforcement
- Medical and Pharmaceutical Staff
- Public Transportation
- Tactical Operations
- Transportation and Logistics

System Features

SD HD	Thermal Imaging Camera	HD Display	Video On Demand	Weather Station
Environment Monitoring	Hazmat Detection	Radiation Detection	Ballistic Resistant	RFID
Navigation	GPS	Accelerometer	Internal Battery	Hybrid Solution
Cloud Based Security	24 Hour Power Management	Panic Button	Ruggedized	3 rd Party Integration

Housing and Mounts

Outdoor	Mobile	Dash Mount	Under- Hood Mount	Roof Mount
---------	--------	---------------	-------------------------	---------------

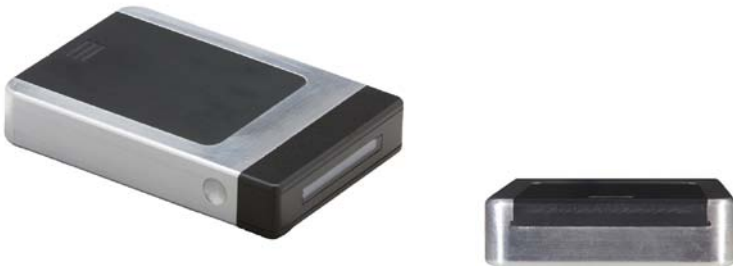
Materials and Finish

Carbon Fiber	Mixed Media	Housing Color
-----------------	----------------	------------------

Certifications

ONVIF Comformant	CE Certified	FCC Certified	UL Certified	IK 10 Rating
---------------------	-----------------	------------------	-----------------	-----------------

Central Command Base Module



Description

The PSS Central Command Base Module is the lightweight, durable foundation to the PSS and features protective ballistic resistant Kevlar IP67 housing and a visual display. It plays a vital role in the system as a central hub by integrating network, location, communication, display and sensor modules.

Each console has a panic alert button, which immediately sends vital information to the command center and features a cancellation window to minimize false alarms or accidental triggers. The visual display expands the wearer's communication capabilities and provides system status information with features such as basic two-way messaging and sensor and battery indicators. An accelerometer detects changes in the wearer's orientation or directional heading, pace, sudden changes in movement, free falls, intense vibrations or shocks. The Base Module also features an extensive communication package, which incorporates both outdoor GPS and indoor IPS location tracking systems and uses the latest Bluetooth standards and near field communication (NFC) technology for easy and reliable pairing.

We incorporate WiFi and mobile data transfer over the most popular communication networks worldwide, and provide up to 4th generation LTE speeds where available. Sensor readings and data gathered by the console are both stored locally on the console and communicated directly with the command center. Local storage enables the console to continue gathering and saving information in the event the console goes offline.

Compatible Systems

- PSS
- KSS
- VSS

Module Features

- Navigation
- Video Display
- Universal Battery Packs
- Accelerometer
- Panic Button
- Mobile Data Connection
- WiFi
- Compass Connectivity
- MOLLE Compatible
- RFID
- GPS
- Internal Storage
- IPS

Highlighted Applications

- Air and Sea Ports
- Bases, Outposts and Checkpoints
- Corruption Theft Prevention
- Energy Infrastructures and Drill Sites
- Event Management
- Guard Route Management
- Guard Support
- Law Enforcement
- Mining and Construction
- MOLLE Compatible
- Movement Monitoring
- Outdoor Recreation
- Parental Control
- Public Transportation
- Staff Monitoring
- Tactical Operations
- Taxi Drivers, Busses and Chauffeurs

Camera Module



Description

As an extension of the Base Module, a small and compact Camera Module easily incorporates video and audio functions into the wearable surveillance system. The Camera Module consists of a small camera and microphone unit that can be clipped or affixed onto the wearer's outer garment to provide eyes and ears to the command center. Despite its small, compact design, the camera offers full HD of 1080p at 30 fps and 16x digital zoom. The camera module communicates with the console via Bluetooth, has a built-in microphone to relay sound to the command center, and has both day and night mode capabilities.

Compatible Systems

- PSS
- KSS
- VSS

Module Features

- SD / HD Recording and Streaming
- Navigation
- Video Display
- Universal Battery Packs
- Compass Connectivity
- Video on Demand
- Internal Storage
- MOLLE Compatible
- Helmet Compatible

Highlighted Applications

- Border Patrol
- Corruption and Theft Prevention
- Event Management
- Guard Route Management
- Guard Support
- High Value Transports
- Law Enforcement
- Tactical Operations
- VIP Protection and Tracking

Vitality Module



Description

As an extension of the Base Module, the Vitality Module enables the command center to closely monitor the wearer's health and physical safety. The sensors are incorporated into a discrete and compact wrist unit with adjustable notification options. The module can alert the command center when the wearer's heart rate becomes dangerously elevated or stops, monitor the wearer's hydration levels, and even monitor whether the wearer may have fallen asleep on the job.

The wearable sensors can provide Electric Cardio Gram, pulse, body temperature, and perspiration level measurements that are transmitted via Bluetooth to the console and wirelessly on to the command center. By monitoring the wearer's vitals, the command center can help protect the health of the wearer and quickly send help should any of the measures drop to dangerous levels.

Compatible Systems

- PSS
- KSS
- VSS

Module Features

- Universal Battery Packs
- MOLLE Compatible
- Vitals Readings

Highlighted Applications

- Air and Sea Ports
- Bases, Outposts and Checkpoints
- Corruption and Theft Prevention
- Energy Infrastructures and Drill Sites
- Event Management
- Guard Route Management
- Guard Support
- Law Enforcement
- Mining and Construction
- Movement Monitoring
- Outdoor Recreation
- Parental Control
- Public Transportation
- Staff Monitoring
- Tactical Operations
- Taxi Drivers, Busses and Chauffeurs

Environment Module



Description

As an extension of the Base Module, an Environment Module enables both the wearer and the command center to closely monitor environmental conditions. The wearer can proceed with a higher degree of safety and confidence knowing his surroundings are safe. Additionally, the command center can alert nearby personnel when unsafe levels are detected, quickly removing them from danger.

An air quality sensor provides continuous readings on often-undetectable dangers such as carbon monoxide, hydrogen and oxygen levels. A temperature sensor included in the console records ambient temperature and a pressure sensor measures atmospheric pressure, which can be used to detect sudden weather and air pressure changes that result from blasts and explosions. All readings by the environmental sensors are transmitted to the Central Command Module via Bluetooth and on to the command center when the sensors detect unsafe levels.

Compatible Systems

- PSS
- KSS
- VSS

Module Features

- Universal Battery Packs
- Environmental Readings
- MOLLE Compatible

Highlighted Applications

- Energy Infrastructures and Drill Sites
- Event Management
- First Responders
- Guard Support
- High Value Transports
- Meteorological Monitoring
- Research and Development
- Tactical Operations

Hazardous Environment Module



Description

In addition to standard environmental readings, the surveillance system provides tools for detecting hazardous environmental materials, many of which are often undetectable by humans. The console equips the wearer with gas sensors that will alert the wearer and the command center to the presence of propane, butane, methane, and natural gas readings at unsafe levels.

A radiation sensor is an optional feature, which can be used to monitor radiation levels in areas of known exposure as well as in a precautionary capacity to alert the guard and the command center to the presence of harmful radiation levels. The potential for harmful radiation exposure is a devastating byproduct of damage to nuclear energy facilities and uncertain radiation distribution channels from known areas of concentration.

The combined capabilities of the Hazardous Environment Module can also be a valuable tool for first responders and medical personnel engaged in disaster relief by removing uncertainty as to the safety of their environment and allowing them to focus on providing aid to others. All module readings are communicated via Bluetooth to the Base Module for local storage and wirelessly on to the command center.

Compatible Systems

- PSS
- KSS
- VSS

Module Features

- Universal Battery Packs
- Radiation Detection
- Compass Connectivity
- GPS
- Poisonous Gas Detection
- Internal Storage
- MOLLE Compatible

Highlighted Applications

- Air and Sea Ports
- Anti-Terrorism
- Border Patrol
- Energy Infrastructures and Drill Sites
- Event Management
- First Responders
- Hazardous Materials Transport
- Law Enforcement
- Mining and Construction
- Public Transportation
- Tactical Operations