



K-9  
Compatible



Smart  
Technology



Indoor



Outdoor

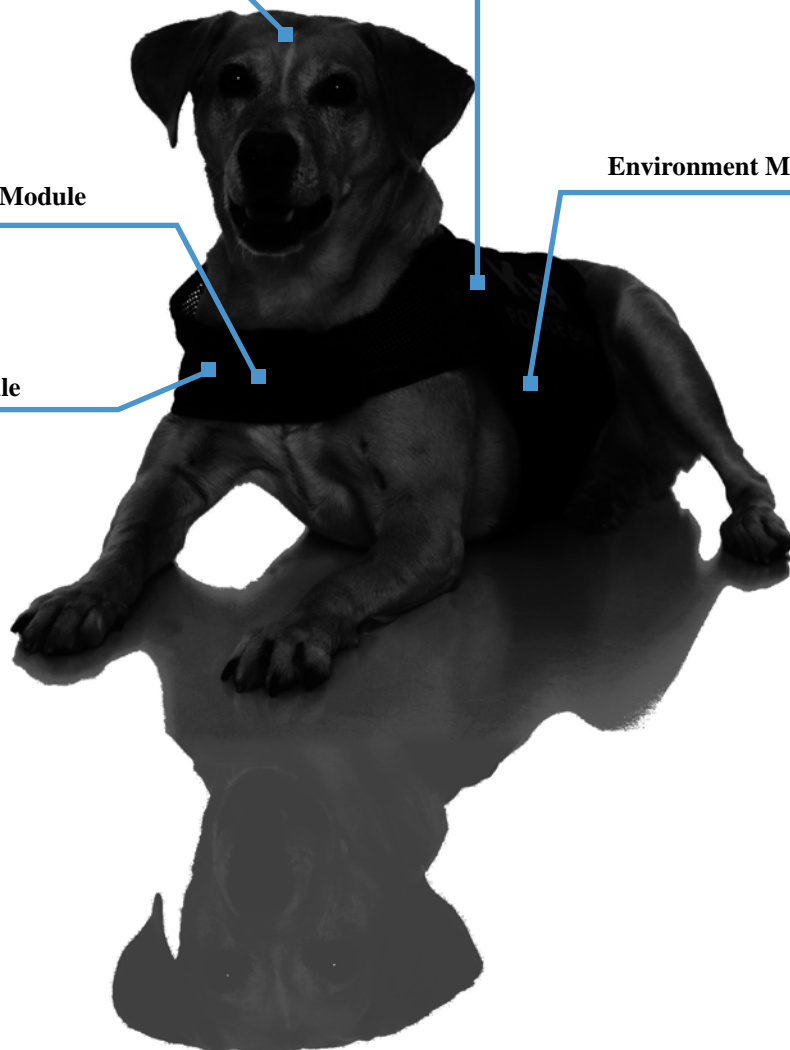
K-9 Camera Module

Central Command  
Base Module

Hazardous  
Environment Module

Environment Module

Vitality Module



## Accessories

- Single Pack Charger
- Multi-Pack Charger
- Solar Charger
- Kinetic Charging

## Description

Animals, especially dogs, are becoming an increasingly valuable asset across many industries. By studying the tasks assigned to working dogs, typical working environments, and dogs' unique movements, we are able to offer our REKKS-PSS for K-9 use—our K-9 Surveillance System (KSS).

The KSS equips the dog with advanced sensors and surveillance capabilities, making the dog itself a valuable information center. The command center is able to gather detailed information about the animal's environment while also being able to closely monitor the animal's health and safety. The Base Module is specifically designed to attach to most K-9 harnesses and includes all Base Module features. As with our traditional PSS, the KSS System can be customized by adding additional modules, including environmental sensors, vitality sensors, and a camera and microphone module that has been specially designed for a snug fit with minimal picture shake through movement.

## System Modules

- Central Command Base Module
- K-9 Camera Module
- K-9 Vitality Module
- Environment Module
- Hazardous Environment Module

## Applicable Industries

- Banking and Treasuries
- Border Patrol
- First Responders
- Guard Services
- Law Enforcement
- Search and Rescue
- VIP Protection and Tracking

## System Features

SD HD	Audio Recording	Vital Readings	Environment Monitoring	Hazmat Detection
Standard & High Definition				
Radiation Detection	Mobile Data Connection	RFID	Navigation	GPS
IPS	Accelerometer	Internal Battery	Modular Freedom	Cloud Based Security
Panic Button	Ruggedized	Screwless Design	Ballistic Resistant	

## Housing and Mounts

Indoor	Outdoor	Portable	Mobile
--------	---------	----------	--------

## Materials and Finish

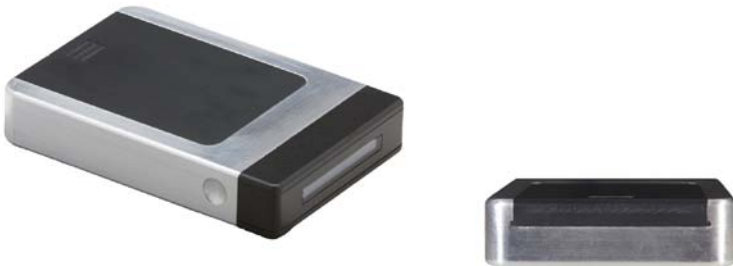
MOLLE	Utility Belt	Cases	Pouch
-------	--------------	-------	-------

## Certifications

ONVIF Comformant	CE Certified	FCC Certified	UL Certified	WiFi Certified
---------------------	-----------------	------------------	-----------------	-------------------

## Central Command Base Module

---



### Description

---

The PSS Central Command Base Module is the lightweight, durable foundation to the PSS and features protective ballistic resistant Kevlar IP67 housing and a visual display. It plays a vital role in the system as a central hub by integrating network, location, communication, display and sensor modules.

Each console has a panic alert button, which immediately sends vital information to the command center and features a cancellation window to minimize false alarms or accidental triggers. The visual display expands the wearer's communication capabilities and provides system status information with features such as basic two-way messaging and sensor and battery indicators. An accelerometer detects changes in the wearer's orientation or directional heading, pace, sudden changes in movement, free falls, intense vibrations or shocks. The Base Module also features an extensive communication package, which incorporates both outdoor GPS and indoor IPS location tracking systems and uses the latest Bluetooth standards and near field communication (NFC) technology for easy and reliable pairing.

We incorporate WiFi and mobile data transfer over the most popular communication networks worldwide, and provide up to 4th generation LTE speeds where available. Sensor readings and data gathered by the console are both stored locally on the console and communicated directly with the command center. Local storage enables the console to continue gathering and saving information in the event the console goes offline.

## Compatible Systems

---

- PSS
- KSS
- VSS

## Module Features

---

- Navigation
- Video Display
- Universal Battery Packs
- Accelerometer
- Panic Button
- Mobile Data Connection
- WiFi
- Compass Connectivity
- MOLLE Compatible
- RFID
- GPS
- Internal Storage
- IPS

## Highlighted Applications

---

- Air and Sea Ports
- Bases, Outposts and Checkpoints
- Corruption Theft Prevention
- Energy Infrastructures and Drill Sites
- Event Management
- Guard Route Management
- Guard Support
- Law Enforcement
- Mining and Construction
- MOLLE Compatible
- Movement Monitoring
- Outdoor Recreation
- Parental Control
- Public Transportation
- Staff Monitoring
- Tactical Operations
- Taxi Drivers, Busses and Chauffeurs

## Camera Module

---



## Description

---

As an extension of the Base Module, a small and compact Camera Module easily incorporates video and audio functions into the wearable surveillance system. The Camera Module consists of a small camera and microphone unit that can be clipped or affixed onto the wearer's outer garment to provide eyes and ears to the command center. Despite its small, compact design, the camera offers full HD of 1080p at 30 fps and 16x digital zoom. The camera module communicates with the console via Bluetooth, has a built-in microphone to relay sound to the command center, and has both day and night mode capabilities.

## Compatible Systems

---

- PSS
- KSS
- VSS

## Module Features

---

- SD / HD Recording and Streaming
- Navigation
- Video Display
- Universal Battery Packs
- Compass Connectivity
- Video on Demand
- Internal Storage
- MOLLE Compatible
- Helmet Compatible

## Highlighted Applications

---

- Border Patrol
- Corruption and Theft Prevention
- Event Management
- Guard Route Management
- Guard Support
- High Value Transports
- Law Enforcement
- Tactical Operations
- VIP Protection and Tracking

## Vitality Module

---



## Description

---

As an extension of the Base Module, the Vitality Module enables the command center to closely monitor the wearer's health and physical safety. The sensors are incorporated into a discrete and compact wrist unit with adjustable notification options. The module can alert the command center when the wearer's heart rate becomes dangerously elevated or stops, monitor the wearer's hydration levels, and even monitor whether the wearer may have fallen asleep on the job.

The wearable sensors can provide Electric Cardio Gram, pulse, body temperature, and perspiration level measurements that are transmitted via Bluetooth to the console and wirelessly on to the command center. By monitoring the wearer's vitals, the command center can help protect the health of the wearer and quickly send help should any of the measures drop to dangerous levels.

## Compatible Systems

---

- PSS
- KSS
- VSS

## Module Features

---

- Universal Battery Packs
- MOLLE Compatible
- Vitals Readings

## Highlighted Applications

---

- Air and Sea Ports
- Bases, Outposts and Checkpoints
- Corruption and Theft Prevention
- Energy Infrastructures and Drill Sites
- Event Management
- Guard Route Management
- Guard Support
- Law Enforcement
- Mining and Construction
- Movement Monitoring
- Outdoor Recreation
- Parental Control
- Public Transportation
- Staff Monitoring
- Tactical Operations
- Taxi Drivers, Busses and Chauffeurs

## Environment Module

---



### Description

---

As an extension of the Base Module, an Environment Module enables both the wearer and the command center to closely monitor environmental conditions. The wearer can proceed with a higher degree of safety and confidence knowing his surroundings are safe. Additionally, the command center can alert nearby personnel when unsafe levels are detected, quickly removing them from danger.

An air quality sensor provides continuous readings on often-undetectable dangers such as carbon monoxide, hydrogen and oxygen levels. A temperature sensor included in the console records ambient temperature and a pressure sensor measures atmospheric pressure, which can be used to detect sudden weather and air pressure changes that result from blasts and explosions. All readings by the environmental sensors are transmitted to the Central Command Module via Bluetooth and on to the command center when the sensors detect unsafe levels.

## Compatible Systems

---

- PSS
- KSS
- VSS

## Module Features

---

- Universal Battery Packs
- Environmental Readings
- MOLLE Compatible

## Highlighted Applications

---

- Energy Infrastructures and Drill Sites
- Event Management
- First Responders
- Guard Support
- High Value Transports
- Meteorological Monitoring
- Research and Development
- Tactical Operations

## Hazardous Environment Module

---



### Description

---

In addition to standard environmental readings, the surveillance system provides tools for detecting hazardous environmental materials, many of which are often undetectable by humans. The console equips the wearer with gas sensors that will alert the wearer and the command center to the presence of propane, butane, methane, and natural gas readings at unsafe levels.

A radiation sensor is an optional feature, which can be used to monitor radiation levels in areas of known exposure as well as in a precautionary capacity to alert the guard and the command center to the presence of harmful radiation levels. The potential for harmful radiation exposure is a devastating byproduct of damage to nuclear energy facilities and uncertain radiation distribution channels from known areas of concentration.

The combined capabilities of the Hazardous Environment Module can also be a valuable tool for first responders and medical personnel engaged in disaster relief by removing uncertainty as to the safety of their environment and allowing them to focus on providing aid to others. All module readings are communicated via Bluetooth to the Base Module for local storage and wirelessly on to the command center.

## Compatible Systems

---

- PSS
- KSS
- VSS

## Module Features

---

- Universal Battery Packs
- Radiation Detection
- Compass Connectivity
- GPS
- Poisonous Gas Detection
- Internal Storage
- MOLLE Compatible

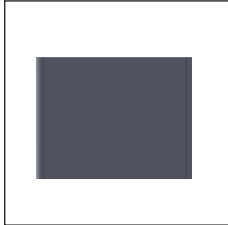
## Highlighted Applications

---

- Air and Sea Ports
- Anti-Terrorism
- Border Patrol
- Energy Infrastructures and Drill Sites
- Event Management
- First Responders
- Hazardous Materials Transport
- Law Enforcement
- Mining and Construction
- Public Transportation
- Tactical Operations

## Battery Packs

---



## Compatible Systems

---

- PSS
- KSS

## System Features

---

- Exchangeable
- Interchangeable
- Rechargeable

## Description

---

The surveillance systems feature an interchangeable battery design for cross-compatibility with our module components. For the modules that naturally draw more power, the batteries are removable to facilitate on-the-go battery exchanging. The batteries are compact and lightweight so as to allow the user to carry an extra. All external batteries are exchangeable and rechargeable and have an average battery life of 10 hours on a full charge.

## Battery Chargers

---

- Single Pack Charger
- Multi-Pack Charger
- Vehicle Charger (Single)
- Solar Charger (Single)
- Kinetic Charger (Single)

## Compatible Systems

---

- PSS
- KSS

## System Features

---

- 110-240V
- Battery Heat Monitor
- Fast Charge
- Off-Grid Charge

## Description

---

All batteries used in the surveillance system are rechargeable. Our external battery charger is available with a single charging bay or a multi-charging bay that can charge up to 5 batteries simultaneously. A single-bay vehicle charger is offered for charging on-the-go. Modules with internal mount batteries offer wireless charging. For renewable energy recharging, single pack solar and kinetic chargers are also available. Battery health and charging status can be monitored through each of our charging units.